



HONDA
SHUTTLE

NIKKYO CO., LTD.

First Registration Year: 2015/10
Manufacture Year: 0

NK-393187

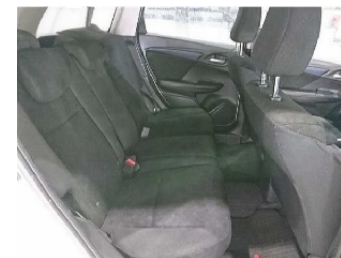
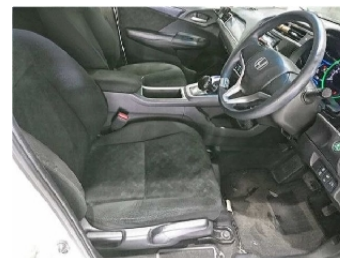
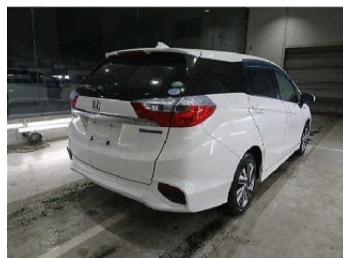
Model: GP8
Grade: HYBRID
Fuel: Hybrid
Drive Train: 4WD

Chassis No: GP8-1001***
Engine:
Seats:

Transmission: AT
Mileage: 125,000 km
Engine Capacity: 1490 cc
Color: WHITE(NH788P)

0.0
Exterior

0.0
Interior



Other Information:

Vehicle Options:

Pwr Steering	Pwr Window	Air Cond.	Stereo	Car CD
ABS	Airbag	Pwr Seat	Seat Heater	Pwr Mirror
Center Lock	Alloy Wheels	Grill Guard	Fog Lamp	Rear Spoiler
Rear Wiper	Sunroof	Spare Tire	Remote Key	Leather Seats
Cruise Control	Navi/TV	Spare Key	Operators Manual	

Price Information