



TOYOTA

SIENTA

NIKKYO CO., LTD.

First Registration Year: 2016/3

Manufacture Year: 0

NK-391887

Model: NHP170G

Chassis No: NHP170G-7038***

Transmission: AT

Grade: HYBRID G □ 15-inch AW □ DUAL POWER SLIDE

Mileage: 140,000 km

Fuel: Hybrid

Engine:

Engine Capacity: 1490 cc

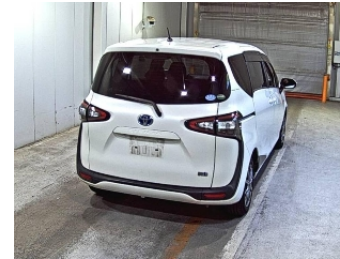
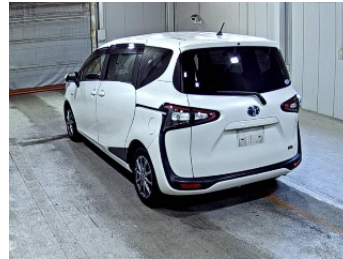
Drive Train: 2WD

Seats:

Color: PEARL(070)

99.0
Exterior

99.0
Interior



Other Information:

Vehicle Options:

Pwr Steering	Pwr Window	Air Cond.	Stereo	Car CD
ABS	Airbag	Pwr Seat	Seat Heater	Pwr Mirror
Center Lock	Alloy Wheels	Grill Guard	Fog Lamp	Rear Spoiler
Rear Wiper	Sunroof	Spare Tire	Remote Key	Leather Seats
Cruise Control	Navi/TV	Spare Key	Operators Manual	

Price Information