



HONDA

FIT HYBRID

NIKKYO CO., LTD.

First Registration Year: 2011/7

Manufacture Year: 0

NK-389937

Model: GP1

Chassis No: GP1-1068***

Transmission: AT

Grade: HYBRID NAVI PREMIUM SELECTION

Mileage: 58,000 km

Fuel: Hybrid

Engine:

Engine Capacity: 1330 cc

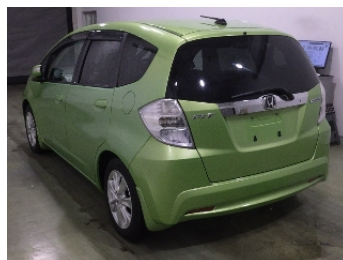
Drive Train: 2WD

Seats:

Color: FRESH LIME METALLIC(GY27M)

0.0
Exterior

0.0
Interior



Other Information:

Vehicle Options:

Pwr Steering	Pwr Window	Air Cond.	Stereo	Car CD
ABS	Airbag	Pwr Seat	Seat Heater	Pwr Mirror
Center Lock	Alloy Wheels	Grill Guard	Fog Lamp	Rear Spoiler
Rear Wiper	Sunroof	Spare Tire	Remote Key	Leather Seats
Cruise Control	Navi/TV	Spare Key	Operators Manual	

Price Information