



HONDA

FIT

NIKKYO CO., LTD.

First Registration Year: 2011/6

Manufacture Year: 0

NK-384011

Model: GP1

Chassis No: GP1-1059\*\*\*

Transmission: AT

Grade: HYBRID SMART SELECTION

Mileage: 116,000 km

Fuel: Hybrid

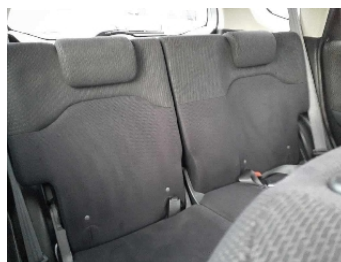
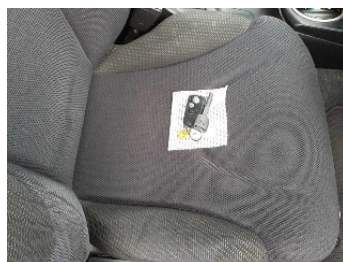
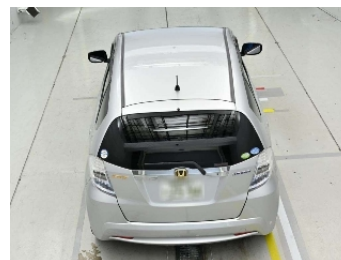
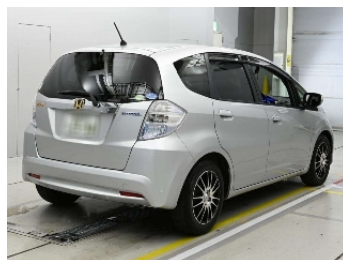
Engine:

Engine Capacity: 1300 cc

Drive Train: 2WD

Seats:

Color: SILVER(NH700M)

4.0  
Exterior4.0  
Interior

Other Information:

Vehicle Options:

Pwr Steering		Pwr Window		Air Cond.		Stereo		Car CD	
ABS		Airbag		Pwr Seat		Seat Heater		Pwr Mirror	
Center Lock		Alloy Wheels		Grill Guard		Fog Lamp		Rear Spoiler	
Rear Wiper		Sunroof		Spare Tire		Remote Key		Leather Seats	
Cruise Control		Navi/TV		Spare Key		Operators Manual			

Price Information