



LEXUS

IS

NIKKYO CO., LTD.

First Registration Year: 2011/2

Manufacture Year: 0

NK-383500

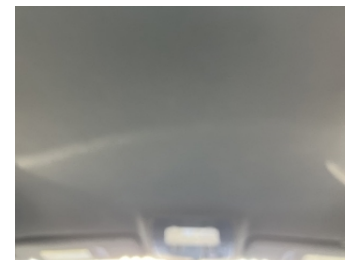
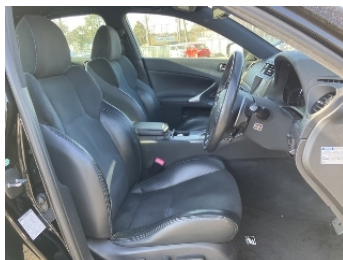
Model: GSE20  
Grade: IS250 F-SPORT  
Fuel: Petrol  
Drive Train: 2WD

Chassis No: GSE20-5145\*\*\*  
Engine:  
Seats:

Transmission: AT  
Mileage: 136,000 km  
Engine Capacity: 2490 cc  
Color: BLACK(212)

0.0  
Exterior

0.0  
Interior



Other Information:

Vehicle Options:

Pwr Steering		Pwr Window		Air Cond.		Stereo		Car CD	
ABS		Airbag		Pwr Seat		Seat Heater		Pwr Mirror	
Center Lock		Alloy Wheels		Grill Guard		Fog Lamp		Rear Spoiler	
Rear Wiper		Sunroof		Spare Tire		Remote Key		Leather Seats	
Cruise Control		Navi/TV		Spare Key		Operators Manual			

Price Information