



TOYOTA HARRIER

NIKKYO CO., LTD.

First Registration Year: 2007/9
Manufacture Year: 0

NK-380858

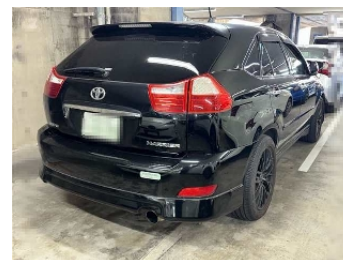
Model: GSU30W
Grade: 350G L PACKAGE
Fuel: Petrol
Drive Train: 2WD

Chassis No: GSU30-9850***
AERO BODY KIT
Engine:
Seats:

Transmission: AT
Mileage: 139,000 km
Engine Capacity: 3450 cc
Color: BLACK(202)

99.0
Exterior

99.0
Interior



Other Information:

- ☐ AFTER MARKET AERO BODY KIT
- ☐ WOOD COMBINATION STEERING & SHIFT KNOB
- ☐ AFTER MARKET 19inch ALLOY WHEEL
- ☐ FRONT POWER SEATS

Vehicle Options:

Pwr Steering	O	Pwr Window	O	Air Cond.	O	Stereo		Car CD	
ABS	O	Airbag	O	Pwr Seat	O	Seat Heater	O	Pwr Mirror	O
Center Lock	O	Alloy Wheels	O	Grill Guard		Fog Lamp	O	Rear Spoiler	
Rear Wiper	O	Sunroof		Spare Tire	O	Remote Key	O	Leather Seats	O
Cruise Control		Navi/TV	O	Spare Key		Operators Manual			

Price Information