

## Vehicle Information

BMW

X3

First Registration Year: 2013/3  
Manufacture Year: 0

373590

Model: WX20

Chassis No: WBAWX320700B26\*\*\*

Transmission: AT

Grade: X DRIVE 20i M-SPORT PACKAGE ☐AW☐NAVI☐PUSHSTART Mileage: 80,000 km

Fuel: Petrol

Engine:

Engine Capacity: 1990 cc

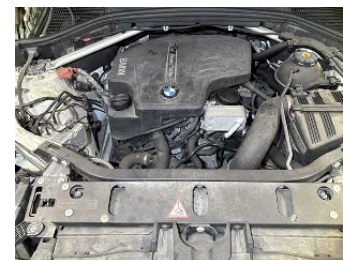
Drive Train: 4WD

Seats:

Color: WHITE

99.0  
Exterior

99.0  
Interior



### Other Information:

- ☐FACTORY 18inch ALLOY WHEEL
- ☐LEATHER SEATS
- ☐CRUISE CONTROL
- ☐STEERING CONTROL
- ☐ELECTRIC PARKING BRAKE

### Vehicle Options:

Pwr Steering	O	Pwr Window	O	Air Cond.	O	Stereo		Car CD	
ABS	O	Airbag	O	Pwr Seat	O	Seat Heater		Pwr Mirror	O
Center Lock	O	Alloy Wheels	O	Grill Guard		Fog Lamp	O	Rear Spoiler	
Rear Wiper	O	Sunroof		Spare Tire		Remote Key	O	Leather Seats	O
Cruise Control	O	Navi/TV	O	Spare Key		Operators Manual			

### Price Information