

## Vehicle Information

TOYOTA

AQUA

First Registration Year: 2014/11  
Manufacture Year: 0

373498

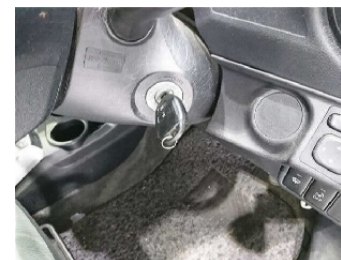
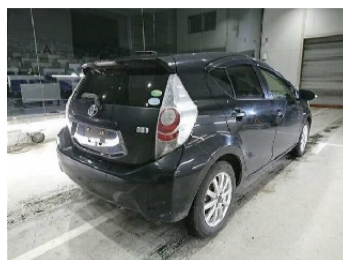
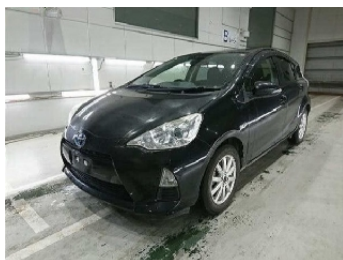
Model: NHP10  
Grade: S  
Fuel: Hybrid  
Drive Train: 2WD

Chassis No: NHP10-6337\*\*\*  
Engine:  
Seats:

Transmission: AT  
Mileage: 135,000 km  
Engine Capacity: 1490 cc  
Color: BLACK(209)

0.0  
Exterior

0.0  
Interior



Other Information:

## Vehicle Options:

Pwr Steering		Pwr Window		Air Cond.		Stereo		Car CD	
ABS		Airbag		Pwr Seat		Seat Heater		Pwr Mirror	
Center Lock		Alloy Wheels		Grill Guard		Fog Lamp		Rear Spoiler	
Rear Wiper		Sunroof		Spare Tire		Remote Key		Leather Seats	
Cruise Control		Navi/TV		Spare Key		Operators Manual			

Price Information