

Vehicle Information

SUZUKI

SOLIO

First Registration Year: 2020/3

Manufacture Year: 0

373421

Model: MA26S

Chassis No: MA26S-263***

Transmission: AT

Grade: G ☐ PUSH START ☐ LEFT SLIDE AUTO DOOR

Mileage: 90,000 km

Fuel: Petrol

Engine:

Engine Capacity: 1240 cc

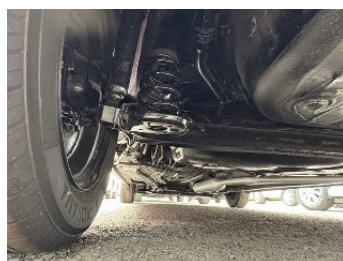
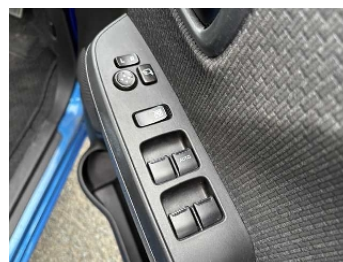
Drive Train: 2WD

Seats:

Color: BLUE(ZWG)

99.0
Exterior

99.0
Interior



Other Information:

Vehicle Options:

Pwr Steering	O	Pwr Window	O	Air Cond.	O	Stereo		Car CD	
ABS	O	Airbag	O	Pwr Seat		Seat Heater		Pwr Mirror	O
Center Lock	O	Alloy Wheels		Grill Guard		Fog Lamp		Rear Spoiler	
Rear Wiper	O	Sunroof		Spare Tire		Remote Key		Leather Seats	
Cruise Control		Navi/TV	O	Spare Key		Operators Manual			

Price Information