

Vehicle Information

SUBARU

XV

First Registration Year: 2014/0

Manufacture Year: 0

372861

Model: GPE

Chassis No: GPE-011***

Transmission: AT

Grade: 2.0I-L EYESIGHT ☐ PUSH START ☐ ROOF RAIL

Mileage: 105,000 km

Fuel: Hybrid

Engine:

Engine Capacity: 1990 cc

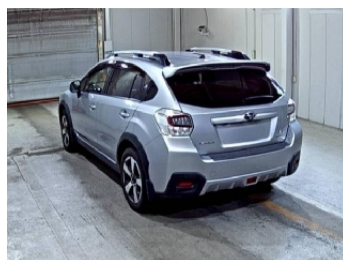
Drive Train: 4WD

Seats:

Color: SILVER(G1U)

99.0
Exterior

99.0
Interior



Other Information:

Vehicle Options:

Pwr Steering		Pwr Window		Air Cond.		Stereo		Car CD	
ABS		Airbag		Pwr Seat		Seat Heater		Pwr Mirror	
Center Lock		Alloy Wheels		Grill Guard		Fog Lamp		Rear Spoiler	
Rear Wiper		Sunroof		Spare Tire		Remote Key		Leather Seats	
Cruise Control		Navi/TV		Spare Key		Operators Manual			

Price Information