

Vehicle Information

SUBARU

IMPREZA SPORT

First Registration Year: 2012/8
Manufacture Year: 0

372783

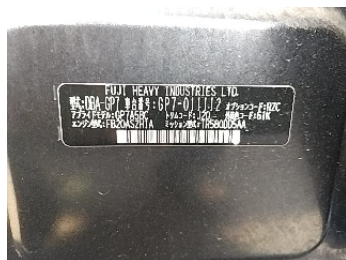
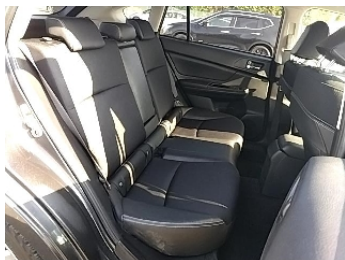
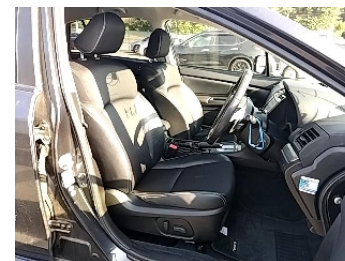
Model: GP7
Grade: 2.0I-S EYESIGHT
Fuel: Petrol
Drive Train: 2WD

Chassis No: GP7-011***
Engine: FB20
Seats: 5

Transmission: AT
Mileage: 106,000 km
Engine Capacity: 1990 cc
Color: GRAY(61K)

99.0
Exterior

99.0
Interior



Other Information:

-4WD

Vehicle Options:

Pwr Steering		Pwr Window		Air Cond.		Stereo		Car CD	
ABS		Airbag		Pwr Seat		Seat Heater		Pwr Mirror	
Center Lock		Alloy Wheels		Grill Guard		Fog Lamp		Rear Spoiler	
Rear Wiper		Sunroof		Spare Tire		Remote Key		Leather Seats	
Cruise Control		Navi/TV		Spare Key	O	Operators Manual			

Price Information