

Vehicle Information

NISSAN

X-TRAIL

First Registration Year: 2016/7
Manufacture Year: 0

370784

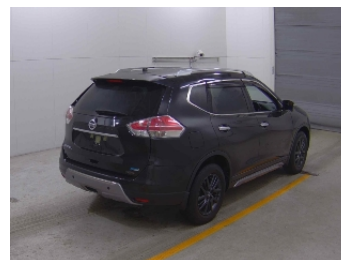
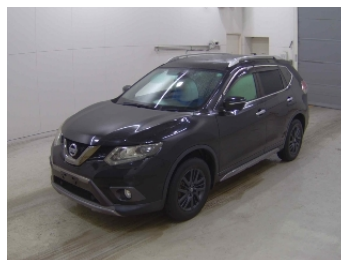
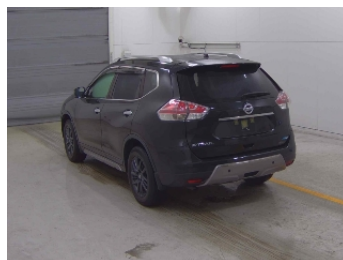
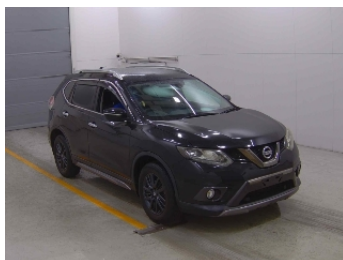
Model: NT32
Grade: 20XT BLACK XTREMER X EMERGENCY BRAKE
Fuel: Petrol
Drive Train: 4WD

Chassis No: NT32-546***
Engine:
Seats:

Transmission: AT
Mileage: 101,000 km
Engine Capacity: 1990 cc
Color: DIAMOND BLACK (G41)

0.0
Exterior

0.0
Interior



Other Information:

Vehicle Options:

Pwr Steering		Pwr Window		Air Cond.		Stereo		Car CD	
ABS		Airbag		Pwr Seat		Seat Heater		Pwr Mirror	
Center Lock		Alloy Wheels		Grill Guard		Fog Lamp		Rear Spoiler	
Rear Wiper		Sunroof		Spare Tire		Remote Key		Leather Seats	
Cruise Control		Navi/TV		Spare Key		Operators Manual			

Price Information