

Vehicle Information

TOYOTA

AQUA

First Registration Year: 2014/11
Manufacture Year: 0

370523

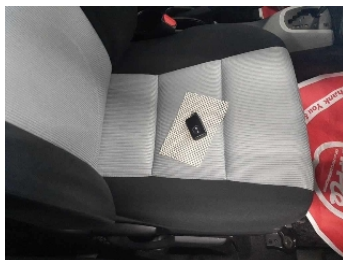
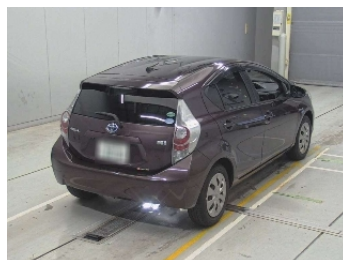
Model: NHP10
Grade: S
Fuel: Hybrid
Drive Train: 2WD

Chassis No: NHP10-2389***
Engine:
Seats:

Transmission: AT
Mileage: 144,000 km
Engine Capacity: 1490 cc
Color: BROWN(9AH)

99.0
Exterior

99.0
Interior



Other Information:

- ☐ AUCTION GRADE 4
- ☐ PUSH ENGINE START
- ☐ GENUINE 7inch NAVIGATION
- ☐ REVERSE CAMERA
- ☐ SEAT HEATER(FRONT)

Vehicle Options:

Pwr Steering		Pwr Window		Air Cond.		Stereo		Car CD	
ABS		Airbag		Pwr Seat		Seat Heater		Pwr Mirror	
Center Lock		Alloy Wheels		Grill Guard		Fog Lamp		Rear Spoiler	
Rear Wiper		Sunroof		Spare Tire		Remote Key		Leather Seats	
Cruise Control		Navi/TV		Spare Key		Operators Manual			

Price Information